

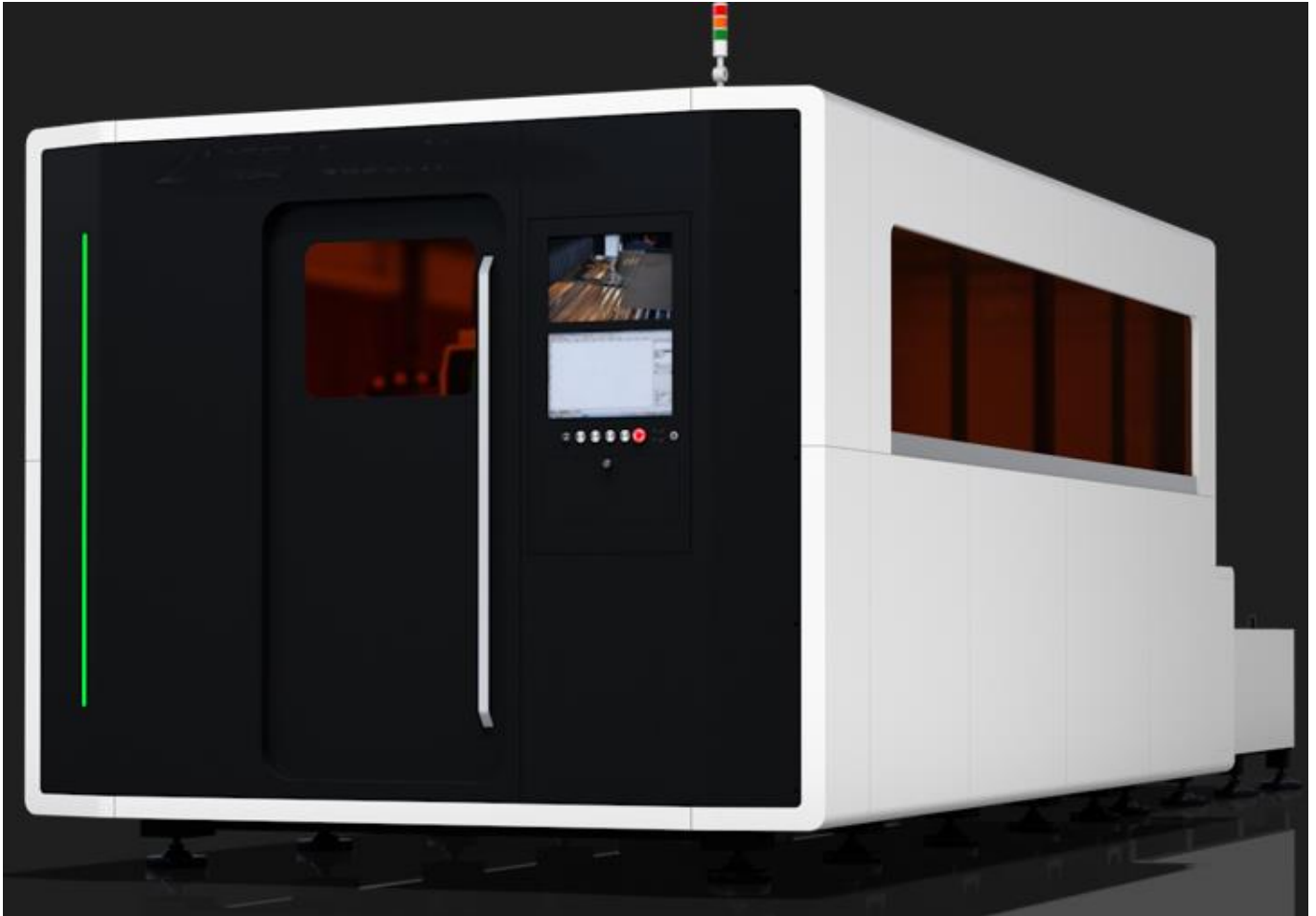
Caxtool Kft.  
H-6791 Szeged, Dorozsmai út 157.  
+36 62 549 908  
[info@caxtool.hu](mailto:info@caxtool.hu)  
Adószám: 12871856-2-06  
VAT: HU 12871856

Bankszámla száma: 57600101-11102986  
SWIFT (BIC): MKKBHUHB  
IBAN: HU65 57600101 11102986 00000000  
cégjegyzékszám: 06-09-014002  
info:

## Képgyűjtemény

### Fiber lézervágó berendezés

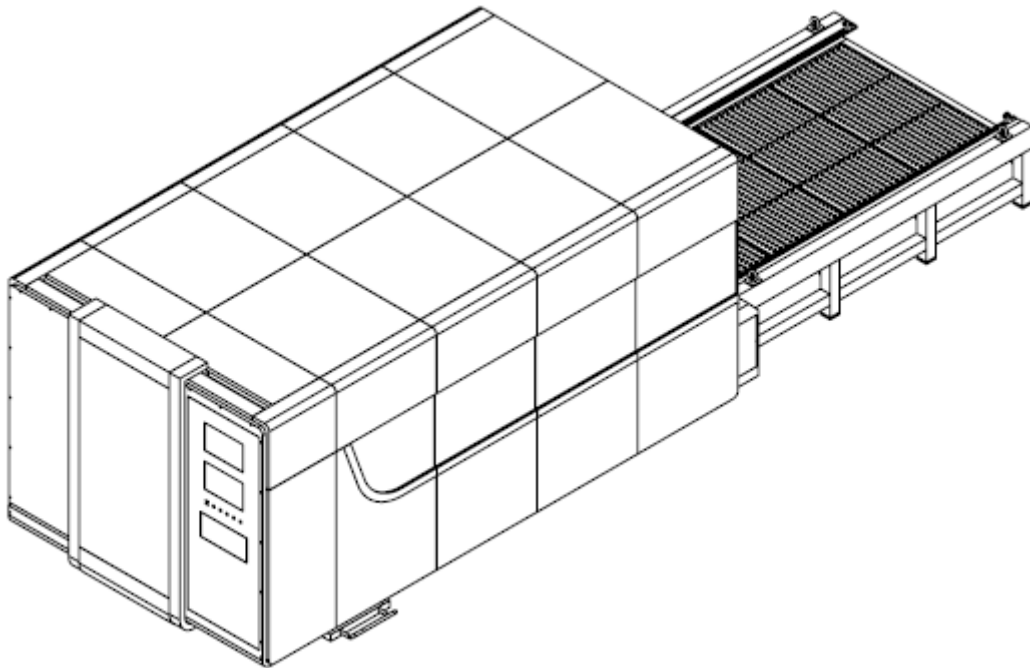
CAXTC\_LM\_3015E\_4kW\_J\_1.0 fiber lézervágó berendezés / Fiber cutting machine





Caxtool Kft.  
H-6791 Szeged, Dorozsmai út 157.  
+36 62 549 908  
[info@caxtool.hu](mailto:info@caxtool.hu)  
Adószám: 12871856-2-06  
VAT: HU 12871856

Bankszámla száma: 57600101-11102986  
SWIFT (BIC): MKKBHUHB  
IBAN: HU65 57600101 11102986 00000000  
cégjegyzékszám: 06-09-014002  
info:



- **Alkalmazási területek / Machine Application**

Widely used in sheetmetal processing, aviation, aerospace, electronics, electrical appliances, automobile, food machinery, textile machinery, engineering machinery, precision parts, ships, metallurgy equipment, elevators, household appliances, craft gifts, tool processing, decoration, advertising, and other fields. Professional used to cut sheet metal like carbon/mildsteel, stainless steel, aluminum alloy, galvanized sheet, electrolytic plate, titanium alloy, aluminum zinc plate, etc.



- **Lézer rezonátor / JPT 4000 Fiber Laser (4000W)**



Excellent quality of laser beam, constant BP within all the ranges of laser powers, getting very small size laser spot even with longfocus.

- Special wavelength (1080nm), unique ability to cut high-reflective materials, such as aluminum, copper and brass, etc.

- Electro-optical conversion rate of the laser >25%, much more efficient than that of CO2 laser (<10%), greatly reducing power consumption.

- Laser transmission through fiber, no transmission loss.

- Modular design, "plug and play", mini size, easy installation, no maintenance of laser and beam transmission system.

- Pumping source service life > 100,000

- Precise quality of laser beam with pretty small divergence angle.

Parameter	Unit	Specification		
Product Model		JPTCW-3000-MM-K	JPTCW-4000-MM-K	JPTCW-6000-MM-K
Nominal Average Output Power	W	3000	4000	6000
Beam Parameter Product	mm*mrad	≤4.5		
Central Emission Wavelength	nm	1080		
Spectral Width@3db	nm	<6		
Delivery Cable Length	m	15		
Cooling Method		Water Cooling (Purified Water)		
Operating Voltage, Single-phase	V	380(AC)		
Maximum Power Consumption	W	12000	16000	24000
Operation Temperature	°C	10~40		
Storage Temperature	°C	-20~50		
Weight	KG	600		
Size	mm	930*1000*1300		

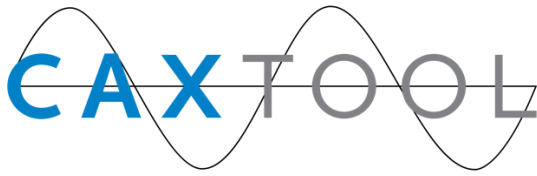
- **Lézerfej / Laser Cutting Head RayTools BM06K autofókusz**

## Raytools BM06K lézerfej



### Power rating 6KW; Standard auto focus laser cutting.

- Cooling structure for both collimation module and focus module, and cooling to nozzle which effectively protects the nozzle & ceramic part and extends the lifespan.
- 4 cover glasses designed to effectively decrease contamination risk during replacement of fiber & cover glass and extend the lifespan of collimation lens and focus lens.
- Auto focus by moving collimation lens to achieve higher speed and bigger auto focus range
- Monitoring to temperature of bottom cover glass could be accessed at mobile APP or computer desktop in real-time. Alarm output for overheating to protect the optical path system effectively.
- Integrated design to ensure sealing. Improved fiber interface (QBH, QD, G5) to benefit their compatibility of lasers and prevent from being stuck for leaks and rusts.



Caxtool Kft.  
H-6791 Szeged, Dorozsmai út 157.  
+36 62 549 908  
[info@caxtool.hu](mailto:info@caxtool.hu)  
Adószám: 12871856-2-06  
VAT: HU 12871856

Bankszámla száma: 57600101-11102986  
SWIFT (BIC): MKKBHUHB  
IBAN: HU65 57600101 11102986 00000000  
cégjegyzékszám: 06-09-014002  
info:

#### Efficient Cooling

Cooling structure for both collimation module and focus module, and air cooling to nozzle which effectively protects the nozzle & ceramic part and extends the lifespan.

#### Multiple Cover Glasses

4 cover glasses designed to effectively decrease contamination risk during replacement of fiber & cover glass and extend the lifespan of collimation lens and focus lens.

#### Fast Focusing

Auto focus by moving collimation lens to achieve higher speed and bigger auto focus range.



#### Intelligent Monitoring

Monitoring to temperature of bottom cover glass could be accessed at mobile APP or computer desktop in real-time. Alarm output for overheating to protect the optical path system effectively.

#### Optimized Structural Design

Integrated design to ensure sealing. Improved fiber interface(QBH, QD, G5) to benefit their compatibility of lasers and prevent from being stuck for leaks and rusts.

## Technical Data

Fiber Interface	QBH, QD, G5
NA	0.13
Auto Focus	
- Range	-35 ~ +25 mm
- Acceleration	$\leq 10 \text{ m/s}^2$
- Velocity	$\leq 200 \text{ m/min}$
- Accuracy	$\leq 10 \mu\text{m}$
Cover Glasses	
- Collimation Side (Top)	$\Phi 24.9 * 1.5 \text{ mm}$
- Focusing Side (Bottom/Middle)	$\Phi 37 * 7 \text{ mm}$

Collimation Length	100mm
Focus Length	150mm, 200mm
Nozzle Styles	Single, Double, Boost
Diameter of Nozzle Tip	
- Single	1.2-5.0mm
- Double	1.0-1.8mm
- Boost	1.6-7.0mm
Assist Gas Pressure	$\leq 30 \text{ bar}$
Weight	$\sim 7.5 \text{ kg}$

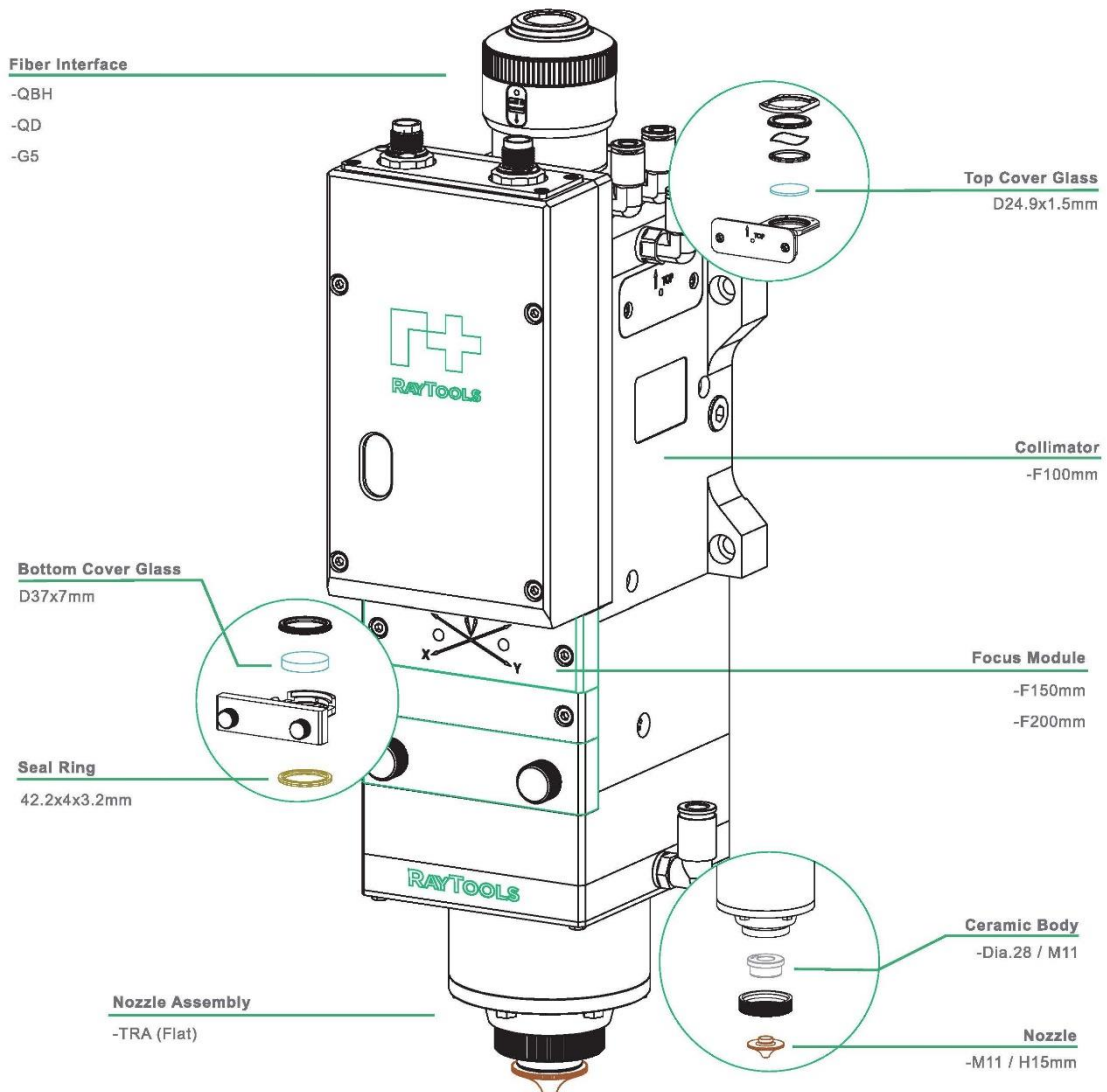
Specifications subject to change without notice.

# RAYTOOLS BM06K SERIES



Auto Focus Laser Cutting Head

Power Rating **6KW**



- **Vízűtő / Cooling SystemS&A CWFL-4000**

TEYU Chiller Manufacturer Specially Designed Industrial Chiller CWFL-4000 For 4kW Fiber Laser

**TEYU industrial chiller CWFL-4000** is designed by TEYU chiller manufacturer to maintain the peak performance of fiber laser welding or cutting machines up to 4KW by delivering highly efficient cooling to its fiber laser and the optics. You may wonder how ONE chiller can cool TWO different parts. Well, that is because fiber laser chiller CWFL-4000 features a dual channel design, saving a lot of cost and installation space for fiber laser users.

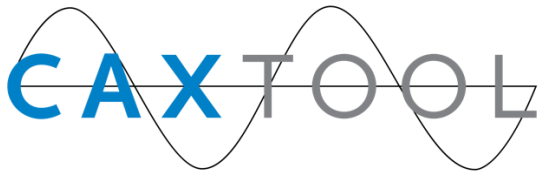
Laser water chiller CWFL-4000 uses components that conform to CE, RoHS and REACH standards. It even supports Modbus-485 communication protocol so that communication with the laser system becomes reality. With integrated alarms, this **laser water cooler** can protect your fiber laser machines in a long run. TEYU **chiller manufacturer** also provides a 2-year long-term warranty for all TEYU industrial chillers, professional sales team and tech support team to provide excellent pre-sales and after-sales services.



- **CNC Control System FSCUT 2000E and Software CypCutE, CypNest**

### FSCUT 2000E

- FSCUT2000E medium power laser cutting system is for 1000-4000W power laser cutting scenarios. It is easy to install and debug with excellent performance and complete solution.



Caxtool Kft.  
H-6791 Szeged, Dorozsmai út 157.  
+36 62 549 908  
[info@caxtool.hu](mailto:info@caxtool.hu)  
Adószám: 12871856-2-06  
VAT: HU 12871856

Bankszámla száma: 57600101-11102986  
SWIFT (BIC): MKKBHUHB  
IBAN: HU65 57600101 11102986 00000000  
cégjegyzékszám: 06-09-014002  
info:

## • Technical Data

- Model FSCUT2000E
- Control card BMC228A
- I/O terminal board BCL4566E
- Motor control signal EtherCAT
- Common Output 24 channels
- Max load of a single channel: DC 24V/700mA
- Software CypCutE
- Interface PCIE bus, X4 and up
- Power Supply 24V DC/2A
- Work Environment Temperature: 0-60°C
- Humidity: 10%-90% RH(no condensation)
- Dedicated Output 2 DA: 0~10V, 12bit, 50mA
- 2 PWM: 5V/24V, 5KHz (0.3%)
- Common Input 27 channels:
- IN1-IN24, active low, 0~15V
- IN25-IN27, active high, 24~8V
- Benefits
- Technique
- Frame Border Contour: Frame profiled plate
- One-Path FlyCut: Supported for all figures to improve efficiency
- Circle Center: Auto center on circular plate and start cutting
- Pallet Changer: Unloading while cutting, keep safe and efficient
- Path accuracy 0.01mm, positioning accuracy 0.001 mm,
- Control
- repetitive positioning accuracy 0.002 mm.
- Unlimited cutting/travel speed
- Maximum acceleration 2G

## • Hardware:

- **BCL4566E** BCL4566E terminal board



- **WKB** Wireless hand-held remote





•

• **BMC228A** master card bmc228a



•

•

•

- **CypNest** is a nesting software designed for CypCut/HypCut sheet laser cutting system. It integrates advanced functions of drawing modification, quick nesting, toolpath generation, analysis report and more to meet your production needs.
- Drawing Modification and ImportIntelligent parts recognition, drawing error identification and optimization. Support file formats of DWG and DXF. Support batch create and import parts via Excel table.
- Nesting StrategyPowerful algorithm engine of high efficiency and production rate; no limit of sheet and parts quantity in nesting; support manual and automatic nesting; support free form sheet nesting.
- Toolpath OptimizationSmart toolpath strategy to minimize travel length; smooth operation style for toolpath adjusting; multiple common line options to meet your production needs.
- Production AssistGenerate analysis report of production and pricing. Technique and cutting parameter perfectly match with HypCut/CypCut laser cutting software.
- 
- Friendless **CypCutE** 2D cutting software is for medium power EtherCAT cutting system. CypCutE is easy to use, rich in functions, stable and reliable. It has advanced functions such as "Smooth MicroJoint", "Fast Cutting" and "Circle Center" to meet various processing needs.
-

- **Lineáris rendszer elemei / Transmission System**



Machine is with Taiwan YC gear rack and PMI linear rail transmission, which ensures machine high speed movement, precision and stability as well.

- **Vezetékrendszer kenése / Auto Lubrication**



It automatically lubricates guide rails, which ensures the machine keep moving smoothly and with good precision.

- **Füst elszívó ventilátor / Exhaust System**



A 2.2Kw centrifugal exhaust fan strongly removes the fumes and dusts caused during cutting.

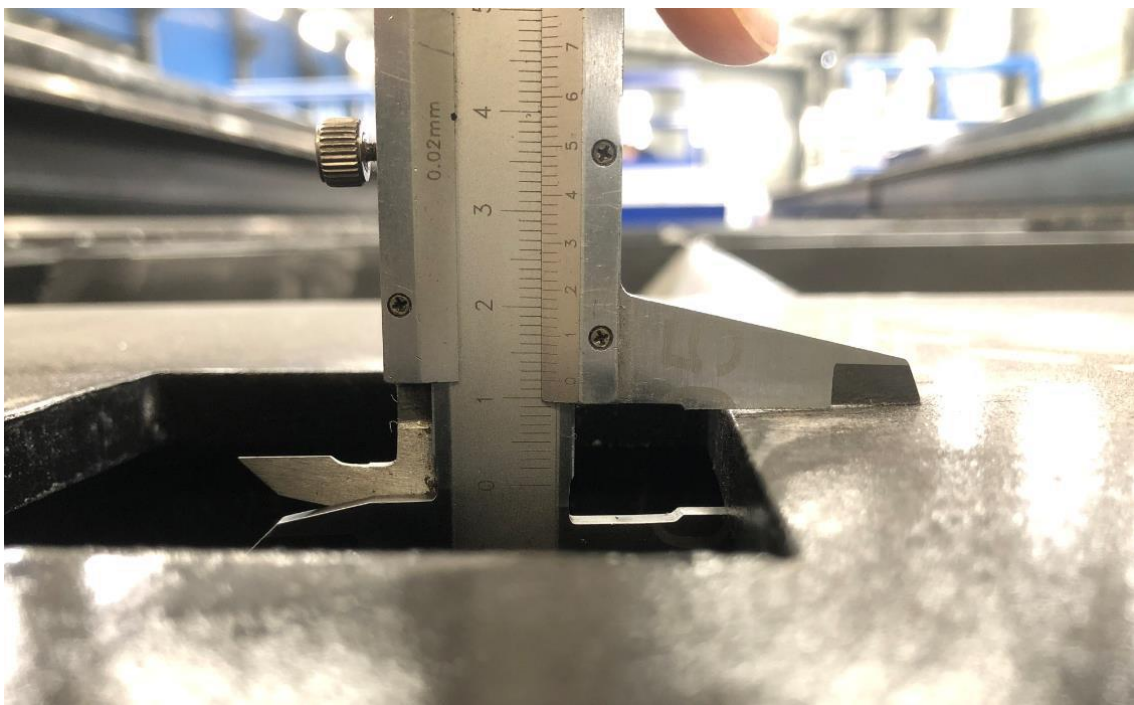
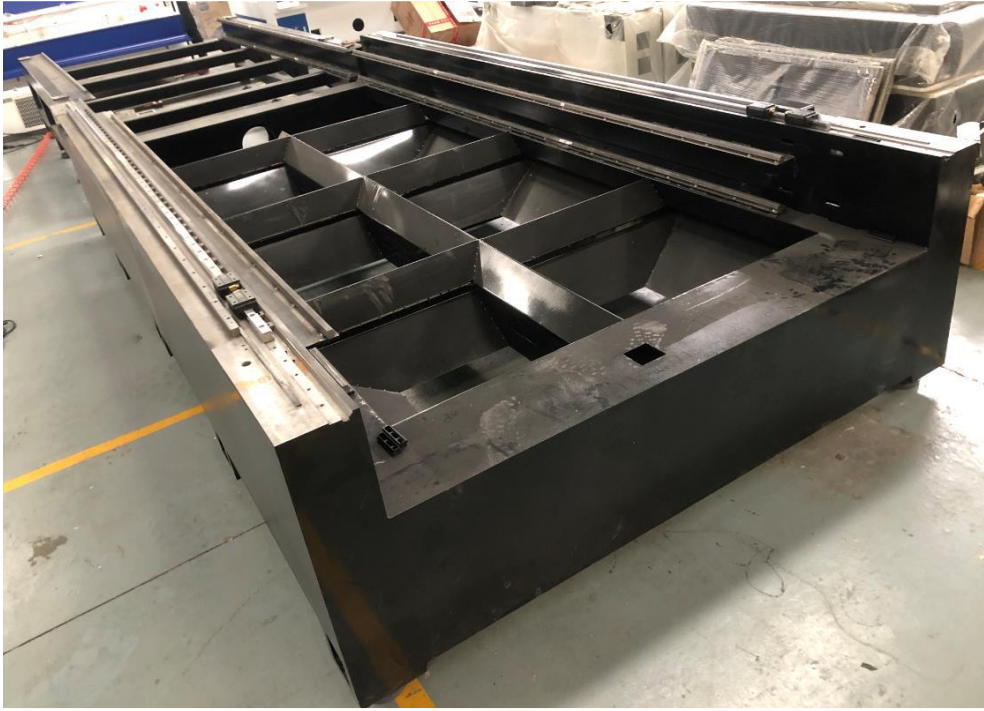
- **Gázvezérlő szelep / Gas Assist Valves (Solenoid Valve, SMC Proportional Valve)**



Gas assists cutting either in cutting speed, cutting thickness or cutting effect. For example, oxygen helps to cut faster and thicker; nitrogen helps to get brighter cutting edge. The solenoid valve controls the gas blowing. Gas blows only during cutting, which saves your gas cost. SMC proportional valve controls the gas pressure and brings good cutting all the time, for example, gas pressure is lowered when cutting corners.

- **Gépágy / Machine Body**

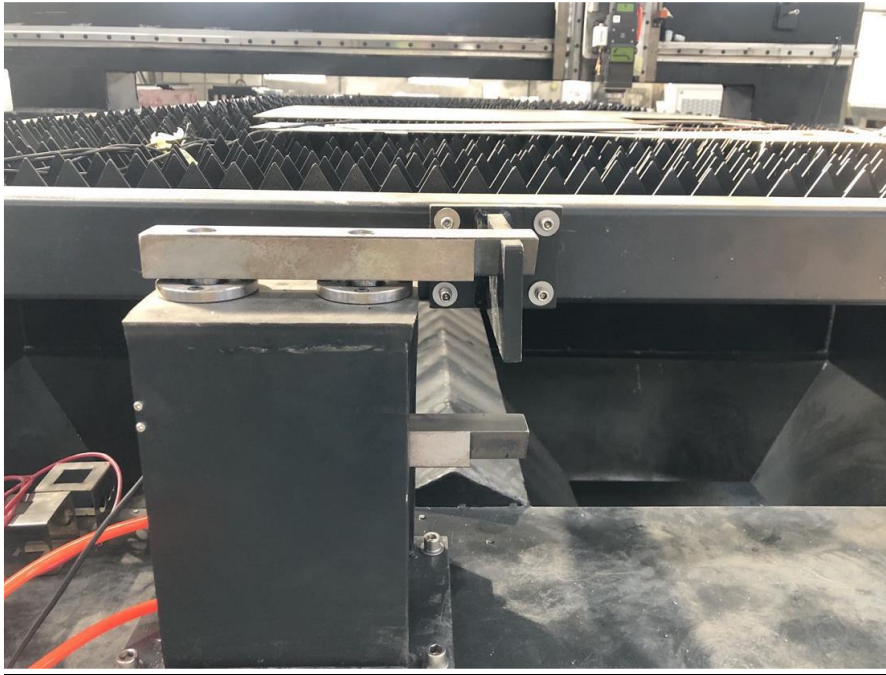
Hegesztett gépágy 12 mm-es lemezvastagsággal. Plate welded machine body. Plate thickness: 12mm.



- **Gépasztal / Machine Table**

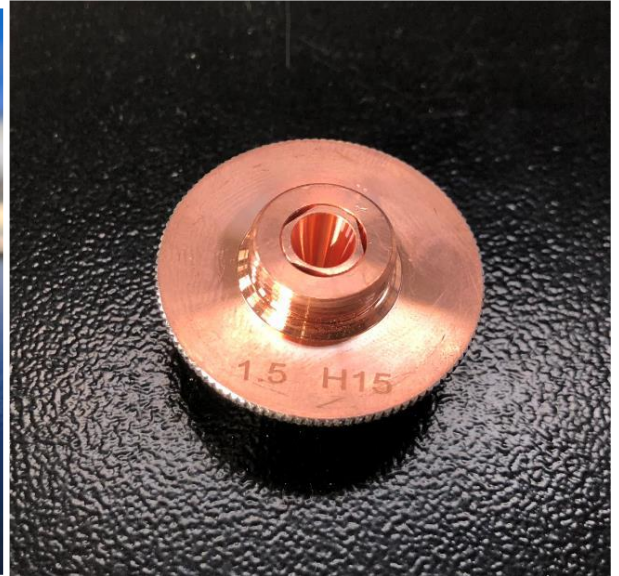
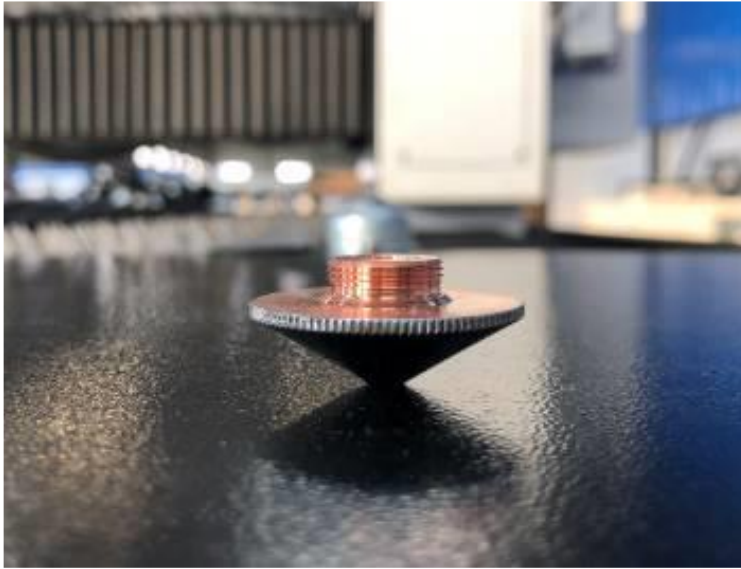
Saw-shape machine table holds metal sheet steady with little touch with metal sheet. The saws are thick and durable. In both sides of machine table, there are rolling balls for assisting sheets loading. Machine table size is 1500mm by 3000 mm. There are 2 machine tables which are exchange able. You can load material on to one table during machine is cutting on another table. After cutting, the tables they exchange.

Exchange table transmission is by chain.



- **Fogyó anyagok / Spare Parts With Machine**

Nozzles (single/double layers, 1.0/1.5/2.0/2.5/3.0 diameter for your choice) and protective lenses.



- **Lézervédelmi szemüveg / Safety goggles**

